



**CONSTELLATION
FUND**

2025 Annual Report



A Letter From Our CEO

Gandhi once said, “The best way to find yourself is to lose yourself in the service of others.” It’s a beautiful idea that I initially interpreted as a call to give more of myself: more time, more resources, more energy.

But I’ve come to understand this doesn’t just mean diving in more deeply. It also means stepping back. Letting go of the assumptions and instincts that often guide our giving—“what moves me” or “what feels right”—and surrendering the idea that I know best.

That shift in thinking is what led me to start the Constellation Fund. I was troubled by a stark contradiction: How can we live in one of America’s most generous states while experiencing some of the nation’s worst inequities? The answer isn’t that we just need to give more. **It’s that we also need to give more impactfully.**

Today, Constellation’s evidence-driven approach is delivering unprecedented returns. Our portfolio of nonprofits generates over \$6 in lifetime benefits for every dollar invested, a return on investment that demonstrates the extraordinary potential when philanthropic resources are deployed with precision. We’ve also refined our evaluation methods, expanded our research capabilities through CoLab, and strengthened our capacity-building support.

But hundreds of thousands of our neighbors still lack access to programs we know can change their lives. As proposed federal cuts threaten families already struggling and state budget constraints eliminate critical services, the opportunity and need for strategic philanthropy has never been greater.

This is why Constellation is developing new approaches to dramatically scale our impact in areas of highest need and proven effectiveness. We’re preparing larger, longer-term investments in organizations ready to serve more people, wrapped with intensive support and rigorous evaluation. And we’re gearing up to share these proven models with policymakers who can bring effective solutions to true scale.

Our investments are rooted in a powerful intersection: where the best data and research show interventions working, and where our neighbors experiencing poverty identify their key needs. This past year, we invested in a first-of-its-kind survey that asked hundreds of individuals and families experiencing poverty what they need to thrive. I believe that our community should be going all in where evidence and lived expertise align.

As a donor myself, I don’t think about giving to Constellation—I think about giving through it, leveraging the organization’s world-class toolkit to amplify every dollar’s impact. Giving inherently feels good, but when I lose myself in service to what evidence shows is working best, I find something even deeper: the satisfaction of knowing my generosity is creating impact that can be both measured and felt.



Andrew Dayton
Founder & CEO

Scaling Constellation's Impact

The mission of the Constellation Fund is to fight poverty in the Twin Cities by raising the living standards of individuals and families living below the poverty line in our seven-county metropolitan area. We take an outcome-based approach to this critical effort, prioritizing evidence over anecdotes in order to find, fund, and scale poverty-fighting services creating transformational impact in our community.

Directed by Data, Driven by Heart

Today, more than 600,000 of our Twin Cities neighbors live in poverty, and in the face of government cuts to food, medical, and housing programs, a big problem threatens to get bigger.

Constellation Fund is reversing that trajectory by investing in evidence-backed and community-informed solutions that work.

Direct Intervention: We channel 100% of every donation given through Constellation straight to nonprofit grantee partners every year. These are the stars in our fight against poverty, assessed through modern data analysis, and informed by listening.

CoLab: We're expanding an evidence accelerator that funds world-class research, advances data infrastructure, and translates evidence into policy change.

Beyond Dollars: We're connecting corporate pro bono talent to our grantees to help them build capacity and shine even brighter.

Growth Fund: We're providing transformational, seven-figure growth capital to help nonprofits scale sustainably much faster than they otherwise could.

Together, we're showing how generosity, when directed by evidence and data and informed by our community, can provide pathways out of poverty for people across the Twin Cities.



The Growth Fund's first focus area will be on home visiting, a method supporting Twin Cities families wherein a trusted mentor visits the household directly, offering education, health, and school readiness coaching. We look forward to sharing more on this important initiative as it gets underway.

GROWTH FUND: Helping Exceptional Nonprofits Sustainably Scale Up

In 2026 we're launching a new initiative called the Growth Fund to help some of our most effective poverty-fighting nonprofits sustainably scale their impact in our community.

Challenges to Scale: Despite the proven impact many Twin Cities nonprofits have on systems of poverty and the people and families experiencing their effects, many of these organizations face substantial barriers to scaling their crucial work. They're trapped in an annual funding treadmill that slows or prevents the growth needed to really meet the community's needs.

A Bigger Boost for Bigger Impact: Through the Growth Fund, Constellation is deploying transformational growth capital and talent to help exceptionally effective yet under-resourced nonprofits sustainably scale for the future. We're taking a four-pillar approach:

INVEST
We're providing seven-figure, multi-year scale-up investment rounds so our Growth Fund grantees can hire, expand and build infrastructure fast.

OPTIMIZE
Growth Fund grantees will be supported by data analytics, research, and rigorous milestones to deliver a high return on every invested dollar. Grantees will also gain access to our Beyond Dollars partners to improve operations and refine strategies.

CATALYZE
We will also invest in research with CoLab to identify additional interventions that can supercharge our grantees' impact with world-class evidence.

SUSTAIN
Each grantee will be supported with an exit plan that enables sustainable expanded impact after the Growth Fund term, whether via government funding, policy change, or private philanthropy.

Your Investment in a Brighter Future for the Twin Cities

The Constellation Fund is proud to report consistent improvements in our benefit-cost ratio (BCR) through the years. Our diversified funding strategy ensures resources are consistently directed where they generate the most significant return for our community. The metrics below illustrate Constellation's ongoing commitment to generating greater, more meaningful impact per dollar invested, reinforcing our position as a leader in value-based philanthropic investment.

Portfolio Performance

Fiscal Year 2025

✦ Grant Investments: **\$3,507,086**

✦ Poverty-Fighting Impact: **\$27,312,010**

✦ Average Historical BCR: **\$5.77**

✦ Current Portfolio BCR: **\$8.02**

Impact by Issue Area

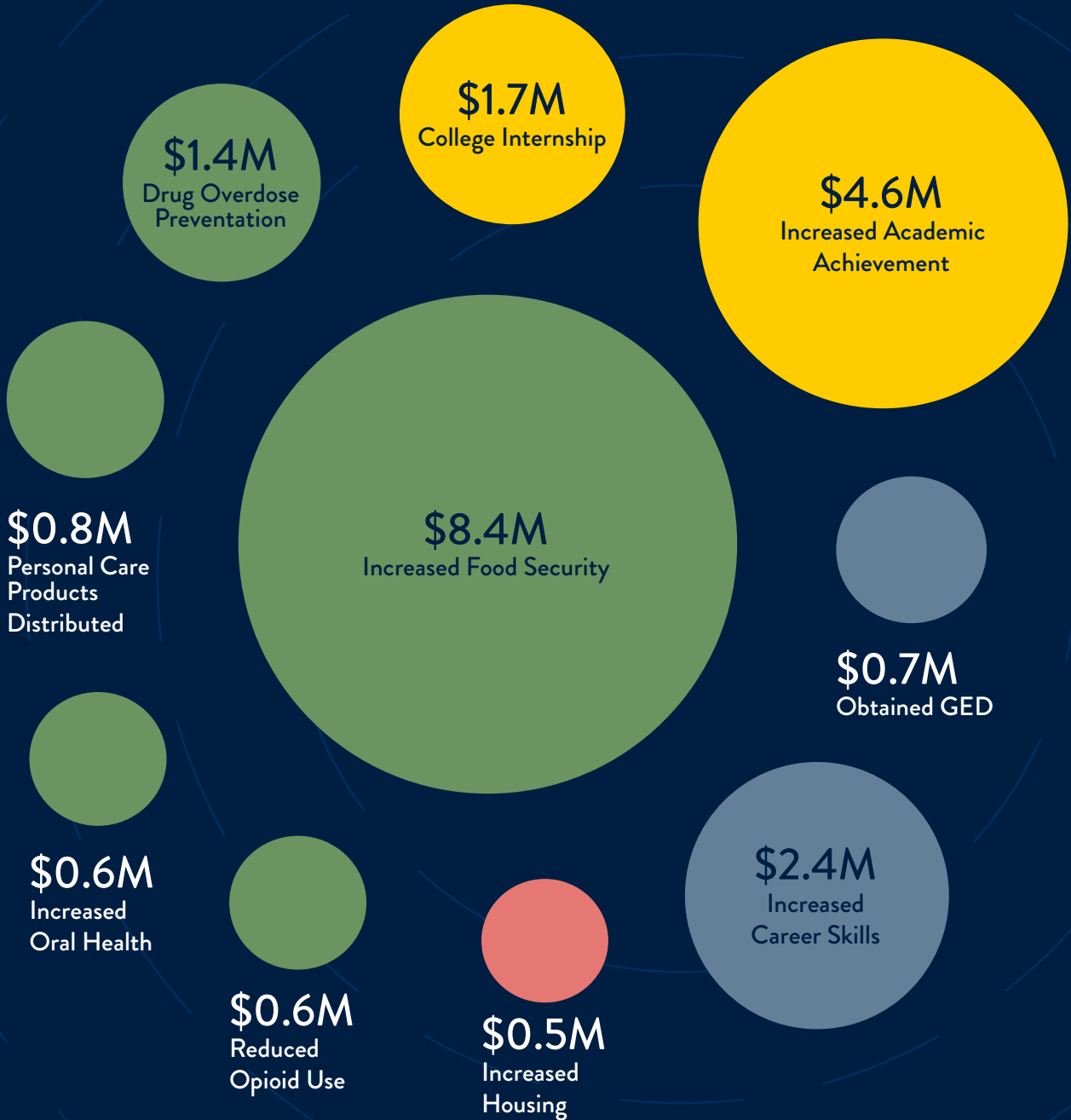
Housing: 5.77%

Employment: 14.48%

Education: 26.91%

Health: 52.85%

Top Outcomes



26
high-impact
Constellation
grantee partners

\$132,692
average
Constellation
grant size

\$7.4M
in research
grants committed
through CoLab

20+
probono projects
catalyzed through
Beyond Dollars

Approx **\$1M**
in professional services
time contributed via
Beyond Dollars



By the Numbers

1,142 volunteers

919,000 visits to food access programs

6.4M pounds of food distributed

2.4M pounds of fresh, local produce rescued

Open Cupboard

Open Cupboard is a Twin Cities based nonprofit providing nourishing food for neighbors experiencing hunger while engaging the full community in the broader fight for increased food access. Open Cupboard operates multiple food distribution programs from drive-up and delivery food service to mobile food shelves and a free market model, ensuring that fresh, quality food is available and accessible to everyone.

The Constellation Fund provides targeted support for Today’s Harvest, Open Cupboard’s free market model offering fresh grocery items that are “rescued” daily from grocery stores, farms, and farmers markets—food that would otherwise go to waste—then redistributed through the market at no cost to shoppers. This food is sorted by volunteers and offered in a welcoming, market-style setting.

Minnesota is experiencing its most severe hunger crisis on record—and food shelf visits continue to rise. Today, one in ten families struggles to afford food. In 2024, there were a record-breaking 8.9 million visits to Minnesota food shelves—up a staggering 1.3 million from the year before.

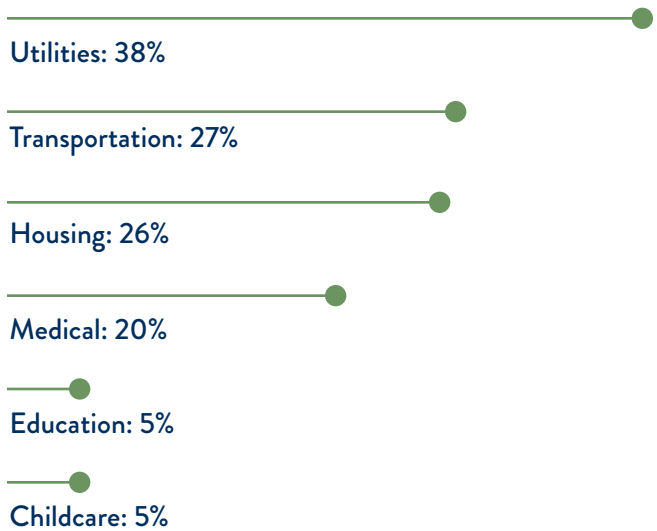
For many families, food insecurity rarely stands alone. Struggles to access food often exacerbate the effects of poverty: food insecurity and hunger are closely linked to higher rates of chronic illness, lower school performance, and diminished lifetime earnings. Minnesota’s rising food shelf visits reflect more than just steep grocery prices—they reveal the thin margin many households are living on, where a job loss, medical diagnosis or bill, and even a home or car repair can push a family into crisis.



“Sometimes it’s either you buy groceries or you buy your medication is what it comes down to for me.”
–Gail, Today’s Harvest Shopper

COMPETING BUDGET PRIORITIES

In 2022, Minnesotans said they had to choose between food and...



Data from Supershelf MN, MN Statewide Survey

Why Constellation Invests

Constellation’s evaluation of Open Cupboard found a model that is not only compassionate, but remarkably cost-effective. Alongside the tremendous economic and health benefits of increasing food access for families, the retail value alone of the food distributed by Open Cupboard’s Today’s Harvest markets is nearly six times greater than its operating costs. That efficiency comes from a web of innovative logistical feats many food access organizations don’t have the infrastructure to maintain, including sourcing, transporting, and distributing large volumes of perishable food every day.

Open Cupboard is proving that smart investments toward innovative solutions can help fight poverty and increase access to nourishing foods with speed, dignity, and scale.



The Bottom Line

This past year, **848 cases were settled** for tenants facing eviction through the housing program at Volunteer Lawyers Network. Of those cases, **628 families were able to stay in their homes** or significantly improve their ability to find new housing.

VLN provided **full representation in 164 cases** for eviction expungement, aiding tenants in maintaining a positive record that allows access to safe, healthy, and affordable housing.

Volunteer Lawyers Network

Volunteer Lawyers Network is a nonprofit connecting Minnesotans facing poverty with volunteer attorneys who provide free legal aid on a broad range of civil issues. VLN is a strong example of Minnesota’s generosity in action, operating through a vast referral network of talented attorneys supplemented by dedicated staff and contract lawyers.

The Constellation Fund is proud to provide strategic support to the housing program at VLN. The program connects lawyers with clients or tenants across the Twin Cities, helping them navigate urgent housing challenges—most critically eviction defense, landlord disputes, and housing repairs. For many VLN clients and their families who are experiencing poverty, quality legal representation and compassionate advocacy like that provided through VLN’s network of lawyers would otherwise be inaccessible.

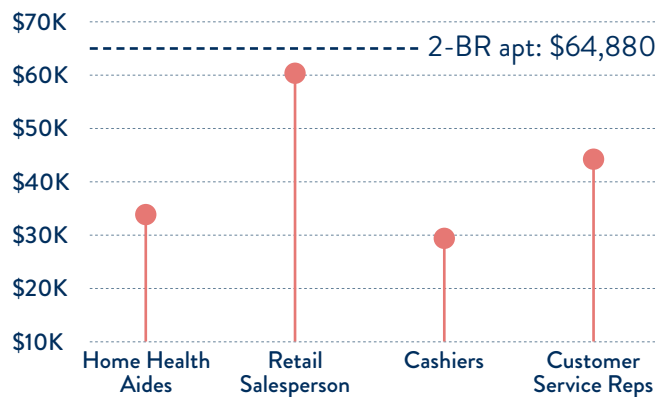
“They were extremely helpful in helping advocate on my behalf...Volunteer Lawyers Network jumped right in and helped win my case and protected my housing rights.”
 –VLN Client

Housing in Minnesota

Housing affordability and stability are experiencing growing pressure statewide. While Minnesota’s eviction rates have risen sharply post-pandemic, low-income renters—especially families with children—bear the brunt of these challenges. Without legal representation, tenants face a high risk of losing housing which can impact health, education, and earnings across multiple generations. The housing services at Volunteer Lawyers Network provide a crucial safety net, offering tenants the legal tools and advocacy needed to stay housed and maintain stability in volatile economic times.

HOUSING AFFORDABILITY GAP

Wages for many Twin Cities jobs often fall short for many hard-working renters.



Data via State of the State’s Housing 2024 by Minnesota Housing Partnership

Building Brighter Futures

Constellation Fund’s analysis highlights VLN’s exceptional value: its eviction prevention work yields strong benefit-cost returns with low uncertainty, thanks to a deeply committed and highly skilled volunteer attorney base and strategic contracting partnerships that maximize client outcomes.

VLN not only prevents client displacement, but helps families retain or regain housing benefits—in other words, keep their jobs and maintain their incomes. These outcomes extend well beyond having a roof over families heads, from lasting health and educational benefits to economic opportunity and lasting mobility.



55% increase in wages for graduates from Takoda Institute at American Indian OIC





American Indian OIC

American Indian OIC is a nonprofit providing individualized education and training alongside human services through a variety of programs to support low-income clients as they pursue education and career development. The Constellation Fund supports the Takoda Institute at AIOIC, which provides career-specific education to students at no cost and a strong foundation for lifelong development and career advancement.

Takoda (Dakota for “friend for all”) offers courses and certifications in high-demand fields including construction, health care, IT, logistics, and professional services. With small class sizes, personalized career counseling, and practical credentials, Takoda prepares graduates to build their skillsets, redirect their careers, and secure lasting employment.

In Minnesota, where nearly 1 in 10 households live below the poverty line, access to career training can be transformative. Evidence shows that stable employment in growing industries not only increases lifetime earnings but also reduces exposure to the economic volatility that keeps many families in poverty.

Research also shows that higher income is closely linked to better health outcomes—families with steady employment are more likely to access health care, experience lower stress, and avoid preventable chronic conditions. For individuals navigating poverty, training that leads directly to in-demand credentials offers both immediate stability and long-term wellbeing.

Constellation’s evaluation reveals that AIOIC’s Takoda Institute delivers significant lasting income benefits for participants. Industries experiencing growing demand often require credentials that many low-income Minnesotans can’t afford. While Native American communities and Black and brown communities in the Twin Cities continue to face generational economic and educational disparities, AIOIC values resilience and remains grounded in the belief that education and training are a direct path to financial independence, a brighter wellbeing, and a stronger society.

MEDIAN WAGE IN THE TWIN CITIES BY OCCUPATION

Cashier	\$15.83 / hr
Construction Laborer	\$28.77 / hr
Medical Secretary	\$23.74 / hr
Phlebotomist	\$21.95 / hr
Restaurant Server	\$11.97 / hr
Truck Driver	\$29.76 / hr

Data from the Occupational and Employment Wage Statistics from the Minnesota Department of Employment and Economic Development

Embedded in the Takoda’s career training pathways program is a model that honors Native traditions and fosters community trust. **For Constellation, Takoda exemplifies how career training—when designed with cultural resonance and comprehensive support—can be a powerful lever for economic equity.**

A Child's Transformation

Raquel & Santiago

For Raquel, finding Centro's Siembra Montessori was nothing short of life-changing for her son Santiago. "When Santiago started at Siembra at just three years old, he was very shy, withdrawn, and almost never spoke to anyone. He was afraid of everything," Raquel recalls.

"Today he is completely different—joyful, confident, and able to communicate with everyone. His behavior changed from night to day," she says with pride just a year and a half later.

"I am grateful to Centro and especially to his teacher... because with her love, patience, and guidance, she has made my son a happy, empathetic, and sociable child. That has no price."



Centro Tyrone Guzman

Centro Tyrone Guzman has been a cornerstone for Latine* families in Minneapolis for decades, offering culturally rooted, multi-generational wellness and educational programming. Centro offers a variety of programs, from early education (Mi Pequeño Mundo home visiting and Siembra Montessori school) to youth (Be@school attendance support and Raíces youth development) to seniors (Wise Elders) and a unique Manos Montessori intergenerational social enterprise.

Culture, compassion, and community are central to Centro’s model. In the past year, Centro shared its services with more than 2,800 people in the Twin Cities, 97% of whom were experiencing poverty. The majority of families participating in Centro’s programming are also led by first or second-generation immigrants whose primary language is Spanish or an indigenous language of South or Central America. Centro weaves together education, health, and cultural identity, all while ensuring cost is never a barrier to participation and that community is at the center.

Why Constellation Invests

While Minnesota’s overall poverty rate is one of the lowest in the nation at 9.3%, the rate for Latine Minnesotans remains far higher—around 14%. This disparity reflects persistent gaps in access to education, health care, and economic opportunity.

Research shows that access to quality early education, like Siembra Montessori and home visiting programs like Mi Pequeño Mundo, services where an educator comes to a family’s home to offer personalized education for parents or guardians and children, can shift those long-term education outcomes. Holistic education programs, with intentional, culturally sophisticated approaches like Centro’s, are improving school readiness, strengthening family bonds, and laying the groundwork for higher lifetime earnings for families and young people in our community.

For Constellation, Centro represents a model where measurable outcomes and cultural relevance work hand-in-hand, driving both economic and social gains.

Strategic investment in community solutions like Centro’s, those rooted in community, culture, and evidence-based practice, are key to closing education attainment gaps for people experiencing poverty in the Twin Cities. By uniting Montessori methodology, youth identity development, intergenerational and communal care, and comprehensive family support, Centro is building pathways to stability and success that extend across generations and into the future.

“I’m so grateful for the Constellation Fund, for the ways you show up with corazón, connect with intention, and open doors for Centro and for our comunidad. It really means so much to us.”
–Ena (Gaya) Castilla, Development Director

*Centro Tyrone Guzman has chosen to use “e” in place of the Spanish-language masculine “o” to include people of all genders.



As Constellation Fund’s research and evaluation arm, CoLab invests in actionable research on solutions for upward mobility.

CoLab aims to reduce intergenerational poverty and support thriving communities by funding and supporting actionable, longitudinal research on programs, practices, and their effects. Better data will grow evidence-informed funding and community efforts to strengthen and scale solutions. CoLab’s investments in research are funded by the Foundation for Educational Research and Development (FERD). This generous commitment significantly amplifies Constellation’s broader impact.

Building the Evidence Base for Fighting Poverty

CoLab serves as a philanthropic evidence engine, supercharging our data-driven approach to fighting poverty and bolstering upward mobility.

CoLab addresses a critical gap in poverty-fighting work: the lack of rigorous, long-term data on what interventions actually create lasting impact. While the Constellation Fund invests in high-performing nonprofits delivering evidence-based solutions, CoLab produces the evidence itself through investing in longitudinal research. This symbiotic relationship ensures that both organizations benefit from increasingly better data.

The need is urgent. Despite Minnesota’s charitable reputation, far too often we lack reliable evidence on poverty-fighting interventions due to insufficient investment in actionable research. CoLab-funded longitudinal evaluations follow participants over multiple years, capturing the true impact of interventions and investments in ways that shorter studies cannot.

COLAB GOALS



Scaling Impact Through Policy Change

In 2025, CoLab will begin engaging with a government relations firm to connect research findings with Minnesota legislative and agency policymakers. This partnership reflects a growing recognition among lawmakers of the need for transparency, measurable outcomes, and data-driven decisions—exactly what CoLab provides. By translating longitudinal research into insights that inform policy conversations, we can help move the state from funding programs to funding outcomes. It's an exciting opportunity to collaborate with local, state, and federal policy-makers

CoLab Projects

Pass the Mic: Listening to Community Wisdom

CoLab awarded its first research grant to Research in Action, a Minneapolis-based research and evaluation group, to conduct Pass the Mic—a systematic study that asks Minnesotans living in poverty what they need for long-term thriving. This collaboration represents a brief and important departure from CoLab’s focus on examining long-term program impacts, instead prioritizing community voice to ensure future investments align with the priorities and needs of those most affected by poverty.

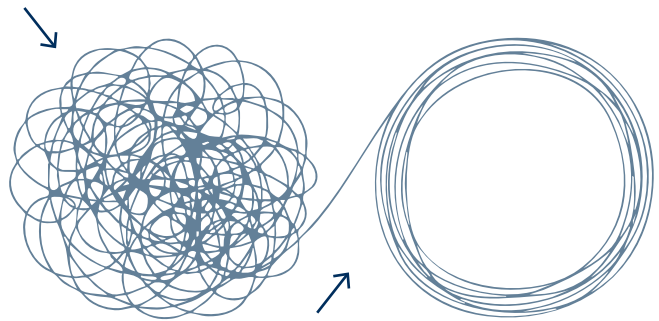
Research in Action engaged over 500 people across Hennepin, Ramsey, and St. Louis counties with current or past experience of poverty, focusing on young adults aged 18-24 and parents of children under 11. The study’s notable methodology involved a Community Action Council of 10 people directly impacted by poverty who co-developed the survey questions alongside researchers.

The findings challenged conventional wisdom. Participants described poverty not merely as financial scarcity, but as “a web” encompassing limited opportunities, psychological impacts, and systemic barriers.

“Thriving is being able to think about what’s ahead instead of being stuck in now; having the freedom to take chances to better your life without fear of falling flat.”

– Pass the Mic Respondent

Poverty is a web.



Specific investment priorities, like housing, utilities, childcare, and healthcare, are needed for **paths to thriving**.

The study produced 11 concrete recommendations, including investing in direct services like housing and childcare, implementing peer support programs, and pairing financial assistance with education. Participants identified monthly direct cash assistance payments of at least \$1,000 for minimum two-year periods as important for creating genuine pathways out of poverty.

These findings are already informing Constellation Fund’s grantmaking and provide a community-driven roadmap for moving beyond good intentions and toward transformative, evidence-backed solutions.



Wallin Scholars: Evaluating Comprehensive Post-Secondary Support

CoLab awarded its first longitudinal impact evaluation grant to MDRC to conduct a rigorous seven-year study of the Wallin Scholars Program. MDRC is a non-profit organization dedicated to improving the lives of people with low incomes through high-quality research and evidence. The evaluation examines whether comprehensive support for low-income students creates upward mobility pathways through post-secondary education.

The Wallin Scholars Program supports students through two pathways: two-year scholarships for community college or four-year scholarships for institutions across the Midwest and Historically Black Colleges and Universities. The program combines financial aid with individualized academic advising and expanded career opportunities.

RESEARCH PROGRAM OVERVIEW

While existing evidence shows some programs improve college completion, few studies track participants long enough to determine whether educational gains translate into economic mobility. MDRC's study will follow students for years beyond their college experience, measuring whether outcomes like enrollment and completion lead to improved employment, income, and upward mobility. The research will assess and compare two cohorts: high school seniors who receive Wallin Scholars support and those who navigate college without that support. As of this summer, the MDRC team is on track to enroll approximately 1,600 high school seniors across two cohorts over the fall of 2025 and 2026.

One Minnesota Trust Youth: Cash Plus for Young Adults

In an exciting public-private partnership, the State of Minnesota is funding an innovative pilot program while

CoLab funds the evaluation of the pilot to determine if the evidence supports scaling up the program. The One Minnesota Trust Youth Cash Plus pilot addresses young adult homelessness through direct cash transfers and peer-led supportive services. Funded by a \$5.3 million state appropriation, Trust Youth is the largest "cash plus" study of this kind in the country.

Research suggests that providing flexible cash assistance can increase food security, promote financial stability, and improve physical and mental health. Trust Youth serves young adults aged 18-24 who experience homelessness and have been in foster care. Participants receive \$1,000 monthly for 24 months plus a one-time \$4,000 stipend. The innovative program pairs cash assistance with supportive programming delivered through coach and peer navigator teams, including financial counseling, housing navigation, and education and career support.

RESEARCH DESIGN

Chapin Hall, a policy research center focused on children, youth and families, leads the longitudinal evaluation using a randomized assignment of 270 participants into intervention and service-as-usual groups. The study will follow outcomes for two years beyond the 24-month intervention period across multiple areas like housing stability, financial wellbeing, health, education, employment, and social support. The evaluation employs a quality improvement framework to provide ongoing feedback to continually strengthen the program.

WHY IT MATTERS

With more than 10,000 Minnesota youth and young adults experiencing homelessness in 2022, effective solutions are urgently needed. Few approaches to youth homelessness have been evaluated on a long-term basis. If successful, the cash plus model could inform smarter policy and budgeting while reducing reliance on expensive emergency services, breaking cycles of homelessness for families and young adults.



beyond dollars

Beyond Dollars is an innovative program that connects skilled professionals at leading Twin Cities companies with Constellation’s grantees to provide pro bono services that help nonprofits grow capacity and fight poverty at scale. Every pro bono activity, from executive coaching and leadership groups, to impact days and fully-customized strategic projects, is rooted explicitly in grantee needs to maximize impact.

HOW BEYOND DOLLARS WORKS:



Expertise in Action:
Corporate partners donate high-value skills in strategy, marketing, finance, HR, and leadership.



Program Support Investment:
Partner companies also make an annual contribution that funds project scoping, project management, and promotion.



Flexible Engagements:
From an Impact Day to custom multi-month transformations, projects are tailored to partner capacity and grantee needs.

A Beyond Dollars Partner Story

How Deloitte is Helping MHR Improve Health Equity

Mental Health Resources is one of Constellation's current high-impact grantees, offering physical and mental support services for people affected by mental illness and substance use disorders. Each year, MHR serves more than 13,000 people across Minnesota, with an impressive 92% of clients reporting an improvement in wellbeing.

The Challenge: Understanding Healthcare Equity

MHR identified an important question that many successful nonprofits eventually face: As their services reach increasingly diverse populations, how can they ensure their impact is transformative for everyone? MHR wanted to examine patterns in visits among clients with serious and persistent mental illness, giving particular attention to any differences in healthcare access between white clients and clients of color.

Beyond Dollars was able to connect MHR with a team from Deloitte, one of the world's leading professional services firms. Deloitte's commitment to making "an impact that matters" aligned well with MHR's mission and Constellation's values.

Building on Strengths: What the Analysis Revealed

The project reinforced many strengths in MHR's model. MHR showed a high benefit-cost ratio by improving both physical and mental health outcomes, maintained strong satisfaction ratings from both clients and case managers, and had achieved improved participation rates in their programming. MHR's performance consistently exceeded benchmarks, with client satisfaction ratings in three of four key areas surpassing both Minnesota and national standards.

The Deloitte analysis also identified several opportunities that could help MHR extend their reach. Deloitte's recommendations focused on enhancing health education programs specifically designed for communities of color, expanding partnerships with culturally responsive healthcare providers, and strengthening collaborative relationships with organizations to help address capacity challenges.

Rather than suggesting fundamental changes to MHR's successful model, Deloitte's recommendations were intentional and strategic, building upon existing strengths while creating new pathways to ensure MHR's services reach people experiencing poverty with equity and effectiveness.

The Power of Beyond Dollars

This partnership illustrates exactly how Beyond Dollars enables Constellation's bright stars, our remarkable grantees, to shine even brighter. Consulting resources can cost hundreds of thousands of dollars, often out of reach for many poverty-fighting organizations like MHR. And for Deloitte, the engagement provided their talented professionals with a meaningful opportunity to apply their skills toward building brighter futures in the Twin Cities.

Deloitte.

Voices of Support



Sophie & Dave Miller
Constellation Donors

“Over the years, we’ve found the Constellation Fund to be among the most effective ways to give back to our community. We are truly inspired by their leadership and methodology—the way they meticulously evaluate organizations using data and research is a model for thoughtful giving. It’s a privilege to partner with an organization that is so dedicated to maximizing every dollar to fight poverty here in the Twin Cities, and we thoroughly enjoy the time we spend with the amazing team at the Constellation Fund.”



Colleen Hartmon Bollom
Lumitas Wealth Strategies
Constellation Board
Member

“Constellation Fund is creating a quantitative and qualitative framework to measure the impact and efficacy of nonprofits serving the most vulnerable people in the Twin Cities. I’m excited to have joined the Board of Directors to support its mission at a more strategic and sustaining level. As a Certified Financial Planner® and investment advisor, I’m eager to apply my analytical skills to help identify and invest in organizations that deliver significant social value and that I know in my head and heart demonstrate measurable results, scalability, and are doing the challenging work of transforming the lives of the people they serve.



Dr. Aaron Sojourner
W.E. Upjohn Institute for
Employment Research
Constellation Impact
Council Chair

“As a researcher and labor economist supporting and advising Constellation on the continuous improvement of their metrics, I believe it is Constellation’s disciplined approach to philanthropy that makes each investment so impactful. I witness firsthand the high-quality data and rigorous processes that are put into evaluations to ensure that every decision benefits from the best-available information—not only in quantitative terms, but also qualitatively. Constellation’s disciplined approach values head and heart, making intentional and impactful change in our community.”

BOARD OF DIRECTORS & LEADERSHIP FUNDERS

Doug Baker, Jr.

Julie & Doug Baker Jr. Foundation

Susan Bass Roberts

Pohlad Family Foundation

Katie Clark Sieben

Cargill Foundation

Tim Connelly

Minnesota Timberwolves

Susan Corridoni

The Corridoni Foundation for Agency
and Self-Determination

Andrew Dayton

The Constellation Fund

Eric Dayton

Cold Climate

Renay Dossman

Neighborhood Development Center

Colleen Hartmon Bollom

Lumitas Wealth Strategies

Russell King*

Peter J. King Family Foundation

Kathleen MacLennan

Community Leader

Dr. Fayneese Miller

Community Leader

Wendy Nelson

The Carlson Family Foundation

Marcia Page

Värde Partners

Robert Pohlad*

Pohlad Companies

Lynne Redleaf

Lynne & Andrew Redleaf Foundation

Sofia Terzic

U.S. Bancorp

Tim Welsh**

CCC Intelligent Solutions

Pahoua Yang Hoffman

HealthPartners

* Leadership Funders who, along with our trustees,
generously cover all of Constellation's operating costs

** Chair of the Board of Directors

CONSTELLATION IMPACT COUNCIL

Dr. Aaron Sojourner

W.E. Upjohn Institute for Employment Research

Dr. Judy Temple

Humphrey School of Public Affairs and the Department
of Applied Economics

Dr. Abigail Wozniak

Opportunity & Inclusive Growth Institute

STAFF

Charlie Althoff
Project Manager, Operations & Events

Jordan Belton
Program Officer

Andrew Dayton
Founder & CEO

Dr. Jose Diaz
Chief Economist

Ruthvin Gardiner
Research Associate, CoLab

Danyale Green
Beyond Dollars Program Director

Cooper Hanning
Managing Director of Grantmaking
& Senior Program Officer

Saanii Hernandez
President

Karisa Johnson
Program Officer

Amy Larson
Engagement Coordinator

Blaire Molitor
Vice President of Engagement

Dr. Matt Morton
Executive Director, CoLab

Dr. José Pacas
Director of Data Leadership
& Investment, CoLab

Sam Storck-Post
Evaluation Officer

Stacy Sweeney
Operations and Executive Support
Officer, CoLab



Our Generous Donors

\$1,000,000 +

Foundation for Educational
Research and Development

\$500,000 - \$999,999

Lynne & Andrew Redleaf
Foundation

\$200,000 - \$499,999

Alyssa and Andrew Dayton
Anonymous
Cargill Foundation
Halloran Family Foundation
John Huepenbecker and
Marcia Page
U.S. Bank

\$100,000 - \$199,999

Alida and Bill Messinger
Carlson Family Foundation
Cornelia and Eric Dayton
David and Kathleen MacLennan
Elizabeth and Tim Welsh
George and Mary Dee Hicks
Jeff and Mary Werbalowsky
Jim and Norma Leslie
John and Lynn O'Neil
Julie and Doug Baker Jr. Foundation
Oxbow Foundation
Peter J. King Family Foundation
Pohlad Family
Smikis Foundation
The Corridoni Foundation for
Agency and Self-Determination

\$50,000 - \$99,999

Anonymous (3)
Beverly Foundation
Colleen Hartmon Bollom
and Pat Bollom
Kevin and Nancy Rhein
Laura and Paul Bergren
Lenzmeier Family Foundation
Negah and Tim Connelly
Racciatti Family Fund
Ronald Fingerhut
Family Foundation
Soran Foundation
Wendy & Colin Smith
Family Foundation
Wisdom Family Foundation

\$20,000 - \$49,999

Amy Langer
Anonymous (4)
ARR Family Foundation
Barry Langton
Charlie and Sally Lannin
Charlie Sellew and David Fiocco
Chuck Rottinghaus and Kirsten Voss
Craig Bentdahl and
Stephanie Simon
Dan and Mary O'Keefe
Dave and Sophie Miller
Don and Lisa Beaupre
Ed and Libby Hlavka
Greg and Lori McMillan
James and Kathy Ganley

Jacqui and Ronald Mason
Jim and Lauri Roberts
John W. Mooty Foundation
Karin Birkeland and Lee Mitau
Kirkland & Ellis Foundation
Knutson Construction
Krisbin Foundation
Merle and Mort Kane
Mary and Paul Donovan
Rhonda and Rory O'Neill
Rich and Wendy Nazarian
Rose Francis Foundation
The Christianson - Simmer Family

\$10,000 - \$19,999

Allan Stillerman
Anonymous (1)
Berit and Michael Francis
Bloomfield Family Foundation
Caroline Dayton and John Bostrom
Cheryl Appeldorn and
Tom Schnettler
Cristiana Giordano and David Kristal
Dayton King Foundation
Deloitte
Dianna and Joel Grebenick
Doug and Nora O'Leary
Gig and Woody Ginkel
Helios Foundation
Joel and Laurie Kramer
John Dunbar and Maggie Helms
Johnnie Hicks and Paige Kaping
John Taft and Laura Delaney Taft
Kathy and Ward Armstrong

\$10,000 - \$19,999 continued

Lyle and Theresa Ward
McKinsey & Company
Mitchell and Patti Bartlett
Sandra Hobbs
Senator Tina Smith and
Archie Smith
Shannon Evenstad
Spencer Family Foundation
The Jay & Rose Phillips Family
Foundation of Minnesota

\$5,000 - \$9,999

Abigail MacKenzie Kerl and Ben Kerl
Amanda and Matt Meents
Amy and John Higgins
Andrew and Meg Murphy
Anna and John Helms
Audrey and Jim Lucas
Baker Foundation
Becca and Owen Stockdale
Ben and Mary Whitney
Bill and Meghan O'Keefe
Charlie and Emily Kelley
Christine Meuers
Clayton and Janna O'Toole
Hannah and Joe Helms
Hanson Family Charitable Gift Fund
Jake Fishman and Kim Lear
Jane Schwartzman
Jay Cowles and Page
Knudsen Cowles
Jean and John Geisler
Jean Taylor

Jeff and Terri Greiner
Jen and Matthew Bertolatus
Jessica and Matt Scherer
Joe Polacek
John Larsen
Laura Beth Landy
Marshall & Elaine Siegel Foundation
Mary Keal
Microsoft
Pam Nightingale
Piper Sandler
Rob Albright

\$1,000 - \$4,999

Adam and Hunter Wright
Alison Spencer
Andrew Cholakian and Jessica
Nordell
Ann and David Heider
Ann and Mark Schulze
Anna and Willie Argo
Ashley Adkison and John Anderson Jr.
Bank of America
Barbara Lannin
Ben and Lynn Oehler
Billy Sushi
BMO Wealth Management
Breck School
Caitlin Van Kooten
CarVal Foundation
Chad Nelson
Chandler and Tim Murphy
D&D Legacy

Daron and Jamie Dolynchuk
David and Jill Orbuch
David and Leni Moore
David Oman and Laura Meier
Deb Keeley and John E. Chadwick
Deborah McNally
Denise and Mark Rabogliatti
Deniz Cultu
Desirae and Justin Butler
Dr. Fayneese Miller and Robert Biral
Elizabeth Borman
EY
Fredrikson & Byron, P.A.
Google
Hilary Caligiuri
J.P. Morgan
Jacinda Crews and Michael Johnson
Jacqueline Crowley
James Farrell
Jamie and Tammy Thingelstad
Jason and Jill Pflaum
Jeanine and Zach Holden
Jeff and Jessie Berman
Jesse and Jessica Grittner
Jim and Peg Hicks
Jimmy and Larisa Sioris
Juanita Griffin
Julia and Peter Offenhauser
Josephine Lawrence Hopkins
Foundation
Karen Grabow and Keith Halperin
Landmark Environmental
Linda Molitor

Lisa Ohlson
Lorene and Tom Magne
Mark and Rebecca Shavlik
Maurice and Sally Blanks
Mike McCloskey
Mike McHugh
Minnesota Timberwolves and Lynx
Northeast Bank Foundation
Northern Lakes Capital
Paul Cowdery
Pin Chung
Push Play LLC
Scott Beuning
Sheri and Steve Lear
Terry, Slane & Ruohonen, PLLC
TYTUS Grills LLC
UnitedHealth Group

Up to \$1,000

Adam Mohr and Saanii Hernandez
Adam and Liz Wolkoff
Amal Karim
Amanda and Richard Thomson
American Family Insurance
Andy and Sophie Rich
Anonymous (2)
Arvind Sastry
Ashley Bakken-Martin and Matt
Martin
Audrey Gotko
Benjamin Wheeler and Emily
Harris-Greene
Beth Silverwater and

Norman Greenberg
Blakely and Ryan Petersen
Dana Marti
Daniel Frankowski
Daniel Weninger
Dave Newman and Francesca
Salvadori
David and Mary Dunn
Dawn Renner
Deborah Zwickey
Donald Lannin
Douglas and Lori Weissman
ECMC Group
Elastic
Elisa Pluhar
Ellen Roos
Emily Guisinger
Fern Peterson
Gordon Paynter
Gregory Ruhland
Jacob Herd
Jamie Hanson
Jane Cacich
Jeffrey Peterka
Jennifer Remick
Jordan Cavanaugh
Jose Souto and Laura Sabatino
Joseph Housman
Julie and Kirk Mitchell
Kaia Chambers
Kaitlyn Anderson
Kong Cheng Moua and
Tiffany Xiong

Laura Fiedler
Lindsay and Nate Reiske
Marcee Schwartz
Mariela Francois
Martha Ballard and Paul Chrenka
Mary Burnton
Mary Cate Peris
Mary Schatzman
Matthew Crane
Mike Quinlan
Paul Manning
Paul Prenevost
Rebecca Pinard
Ryan McKinney
Samuel Cowan
Sarah Hauge
Sarah K. Oltmans
Stacy Harmsen
Steve Beuning
The Dante Moreira Gilbert Fund
Thomson Reuters
Tom Bergen
Värde Partners
Vicki Donatell



**CONSTELLATION
FUND**