



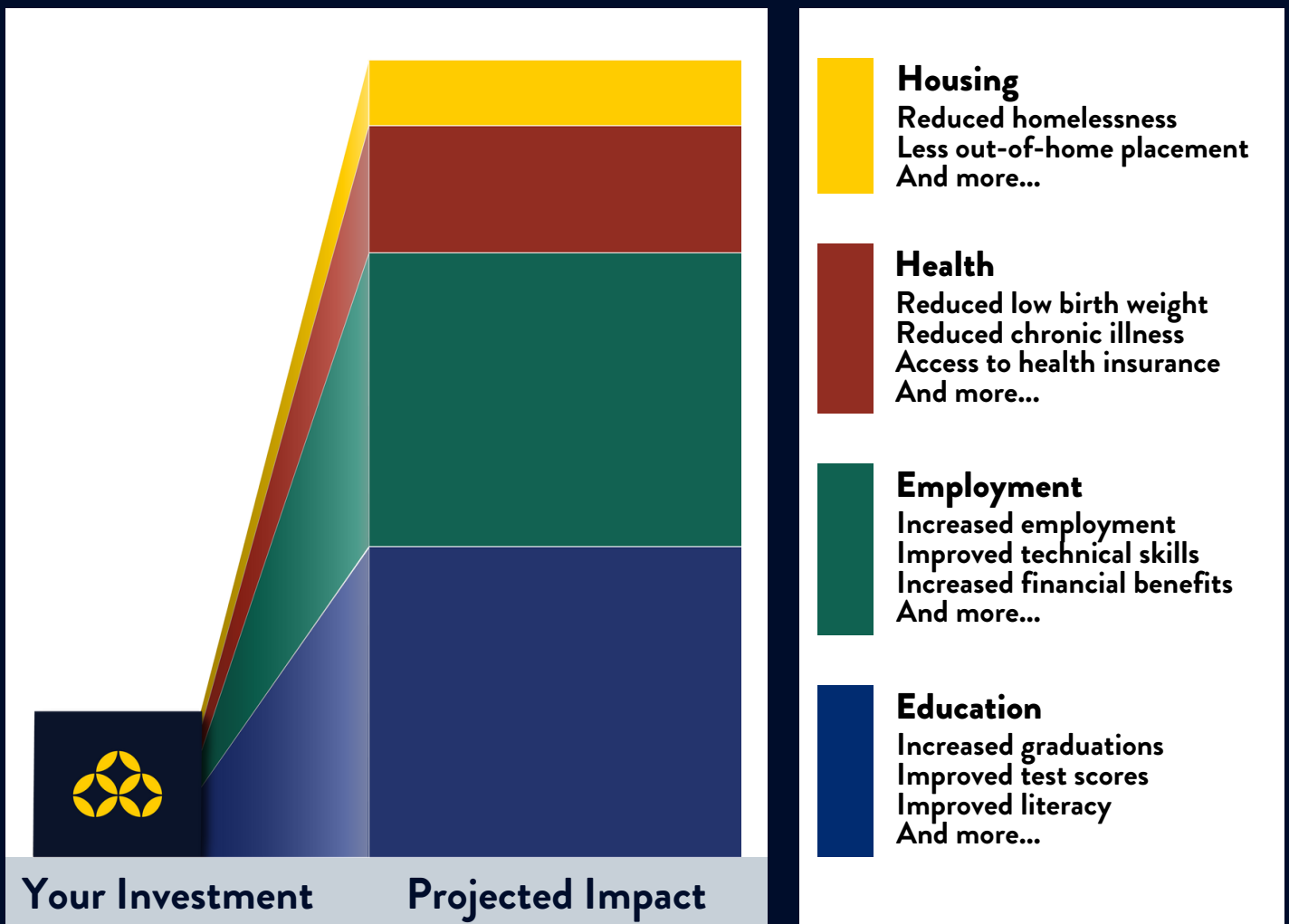
IMPACT REPORT

May 2022 Grant Round

Overall Investment Summary

TOTAL INVESTMENT	\$2,005,000	AVERAGE GRANT SIZE	\$138,214
AVERAGE BENEFIT-COST RATIO	\$5.47 : 1	POVERTY-FIGHTING IMPACT	\$10,967,350

To-Scale View of Poverty-Fighting Impacts



By investing in 14 of our community's most impactful nonprofits, \$2,005,000 of your donations to Constellation are projected to create \$10,967,350 of quality-of-life improvements for individuals living in poverty in the Twin Cities. This return on investment comes from the measurable impacts that evidence indicates will be created as a direct result of these investments in our grantees, such as:

Projected Investment Outcomes Highlights	Total
INDIVIDUALS TO INCREASE EMPLOYMENT	206
STUDENTS TO IMPROVE ACADEMIC PERFORMANCE	3,302
INDIVIDUALS TO IMPROVE MENTAL HEALTH	77
INDIVIDUALS TO EXPERIENCE REDUCED HOMELESSNESS	158